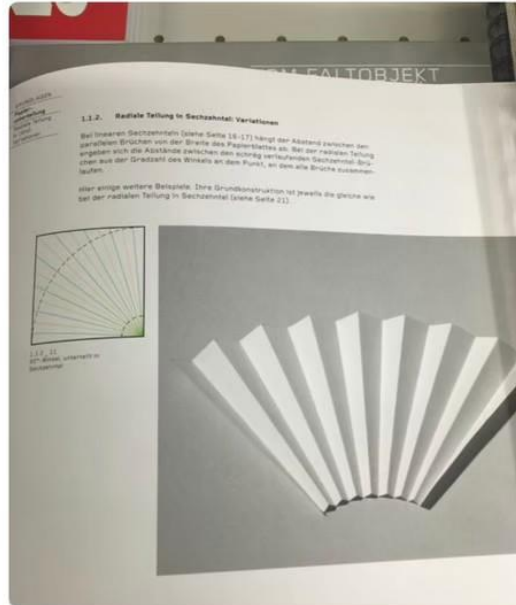
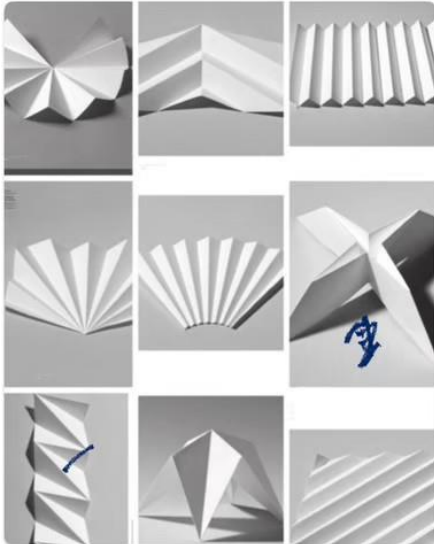
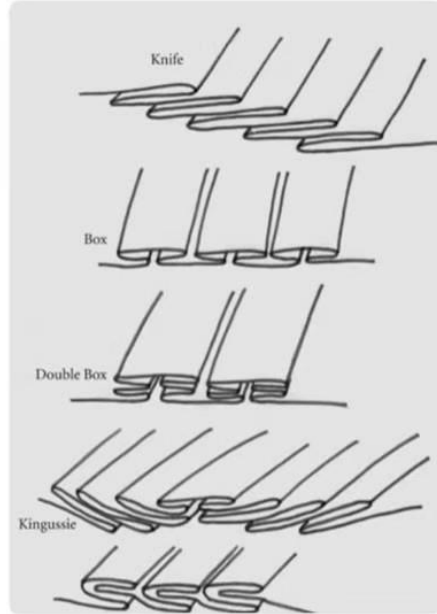
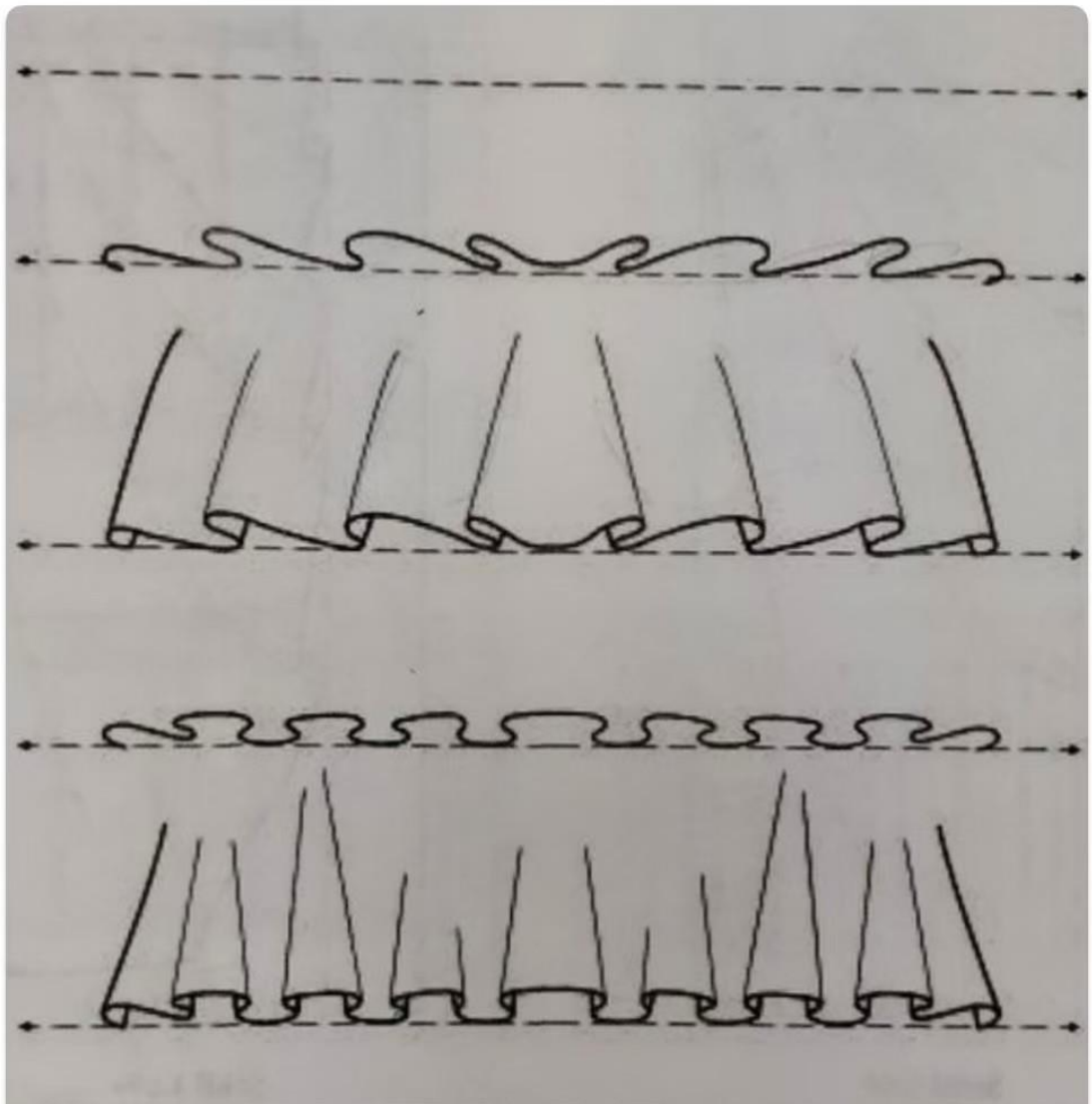
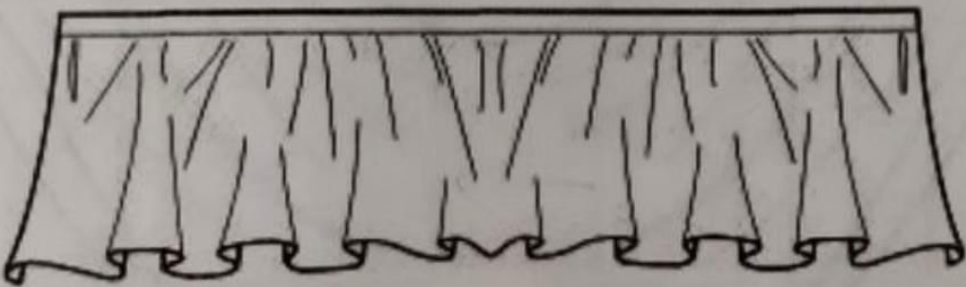


← Pleat. →

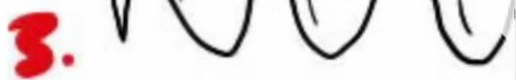
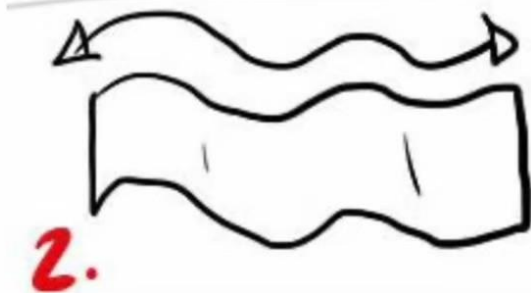


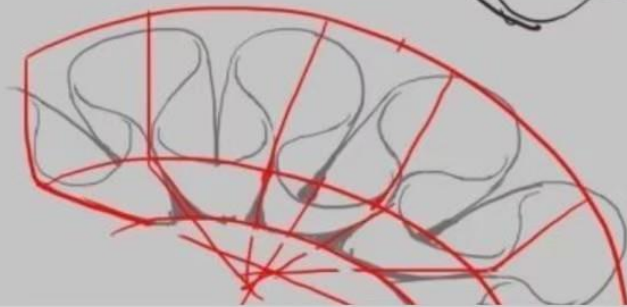


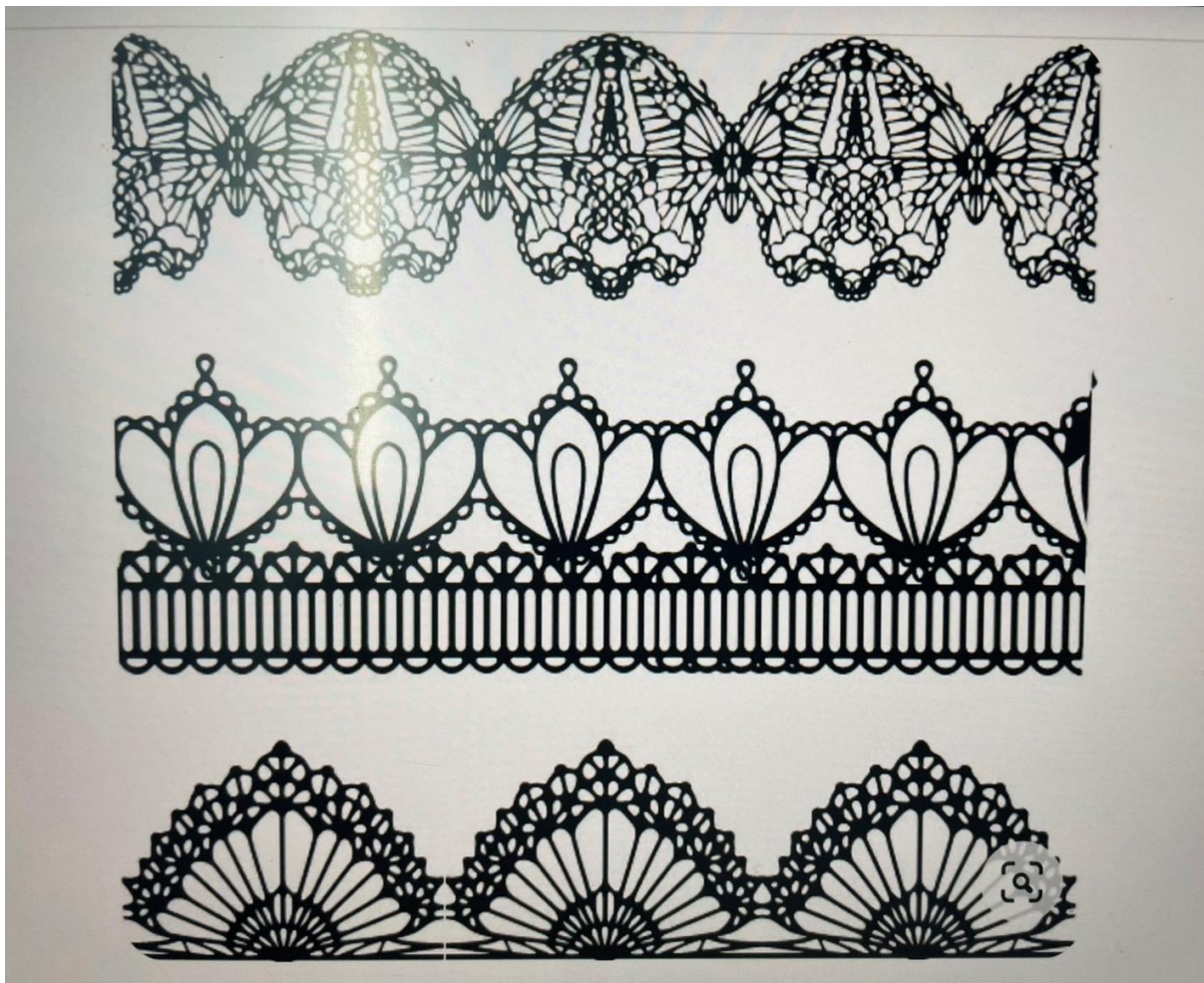
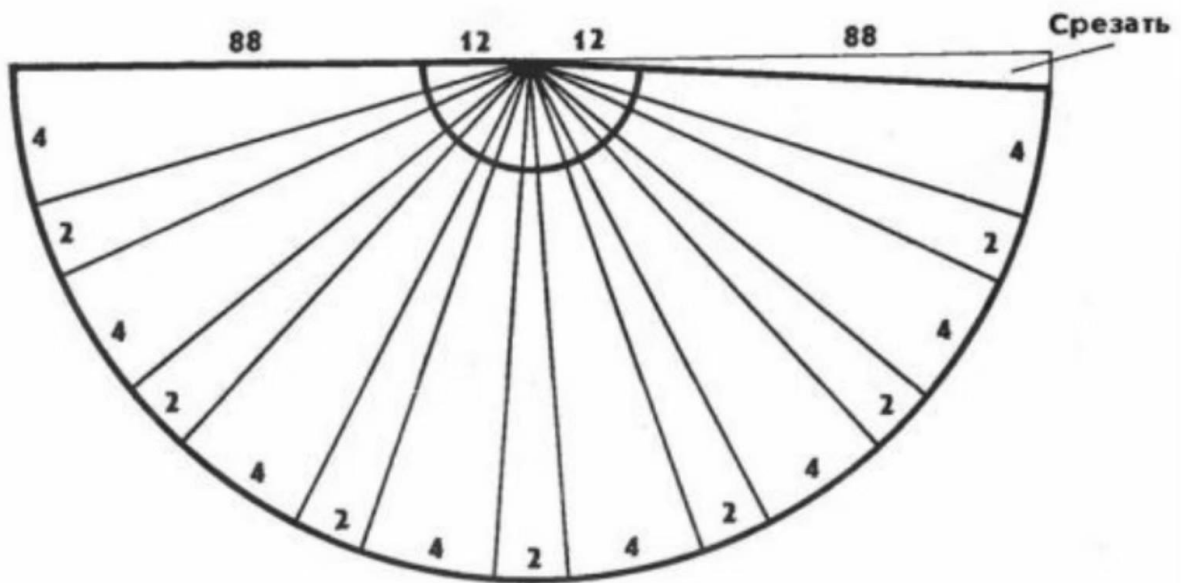
Şekil 1.67



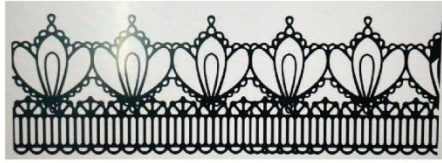
Ruffle Collar thing~







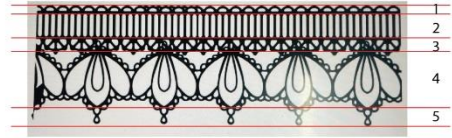
ลายที่ 1



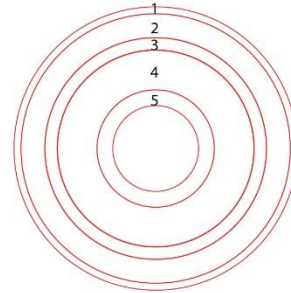
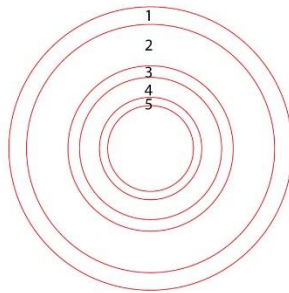
แบบที่ 1

แบบที่ 2

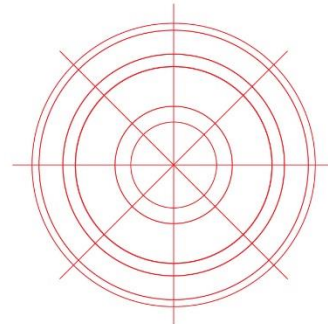
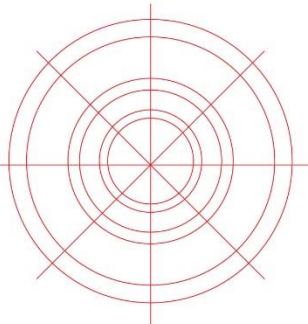
1. แบ่งลาย



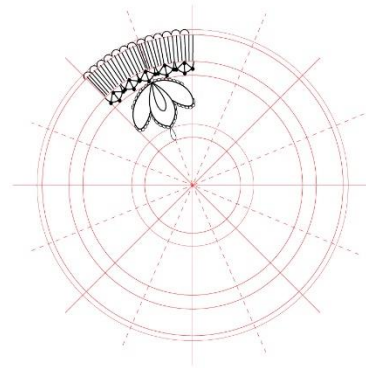
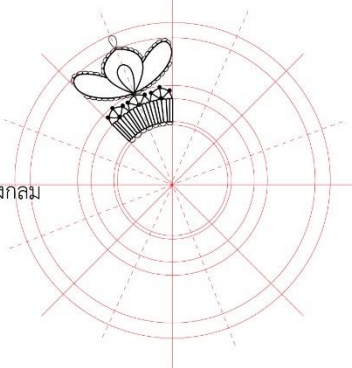
2. นำมาสร้างเป็นวงกลม

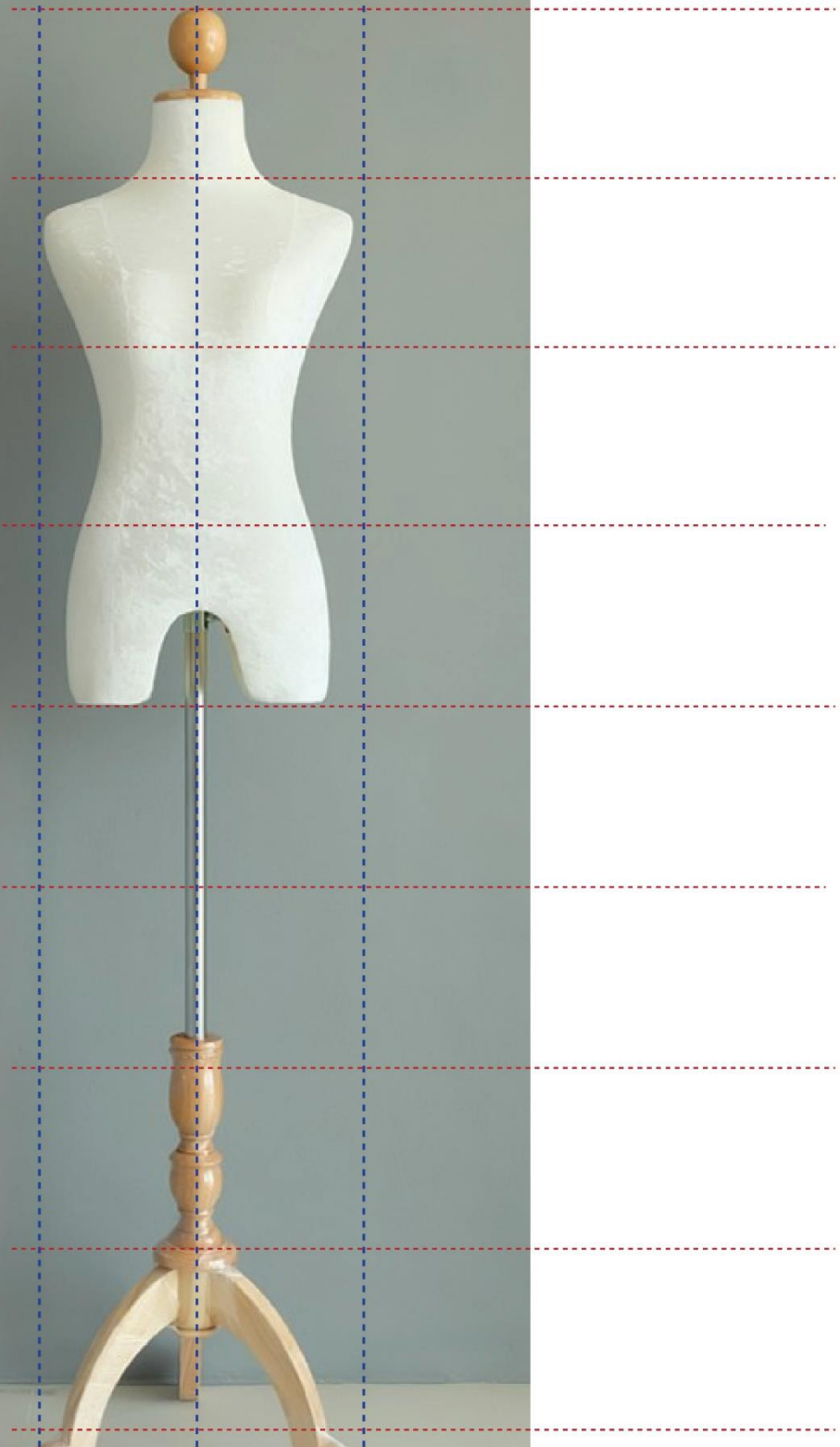
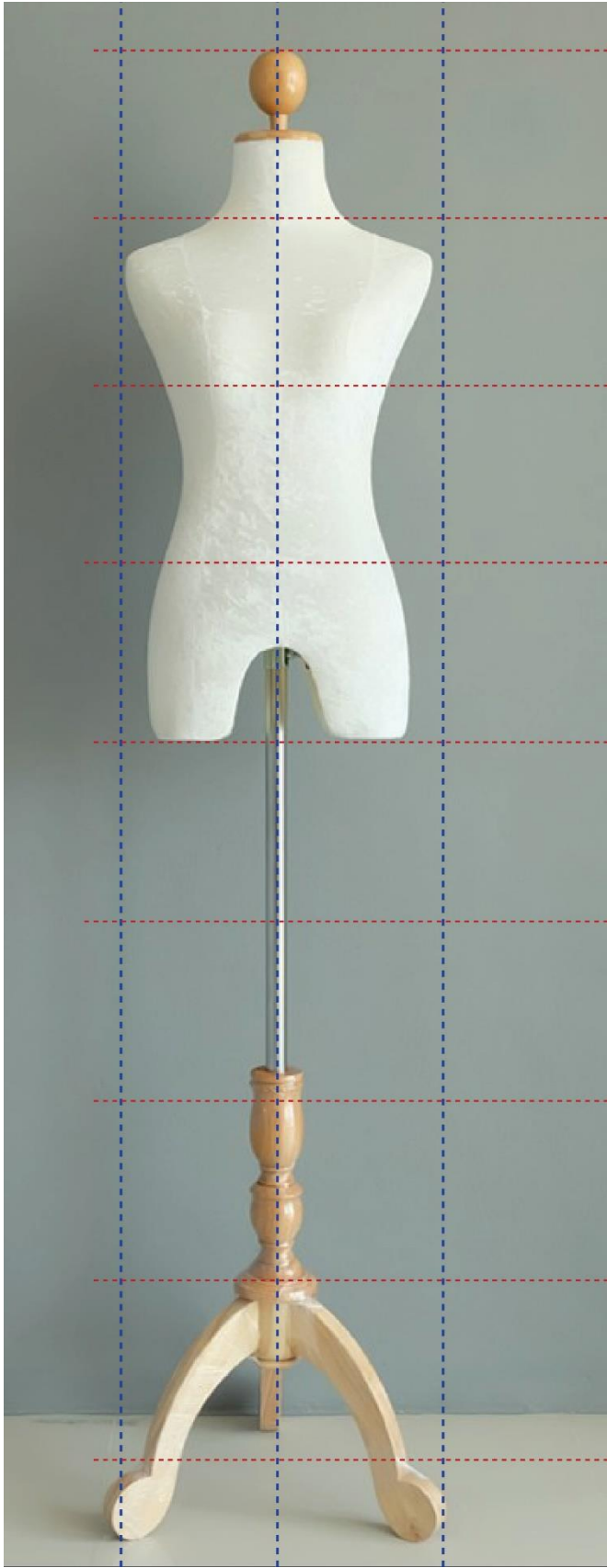


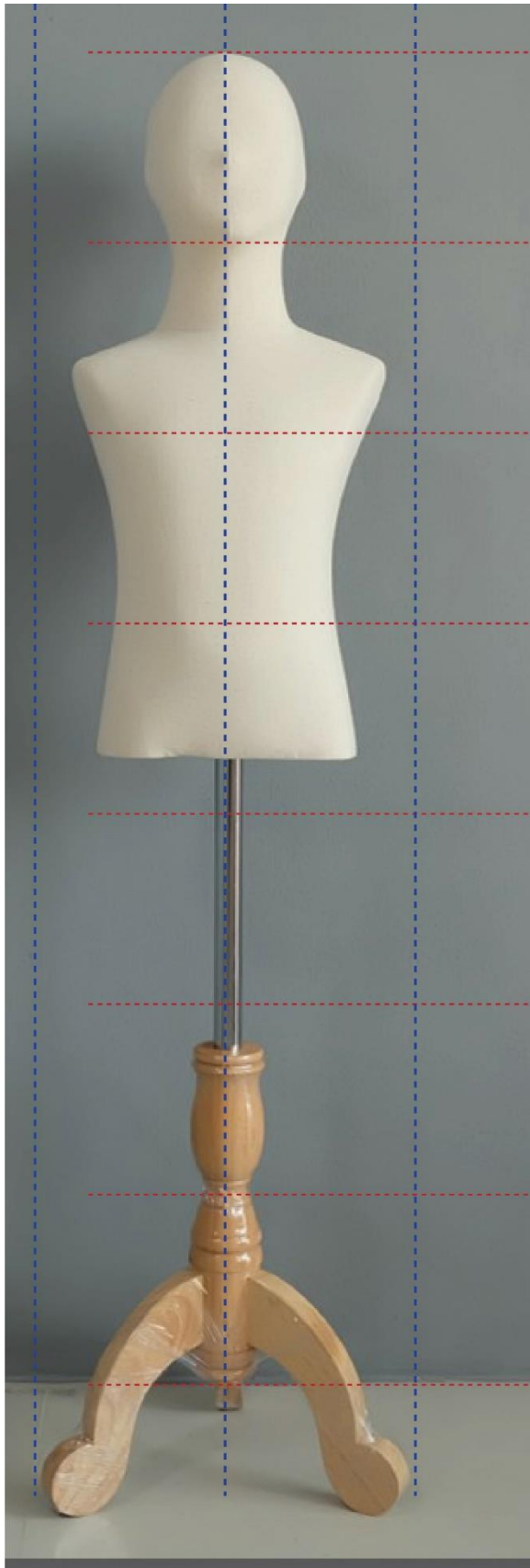
3. แบ่งสัดส่วนวงกลมเป็น 8 ส่วน

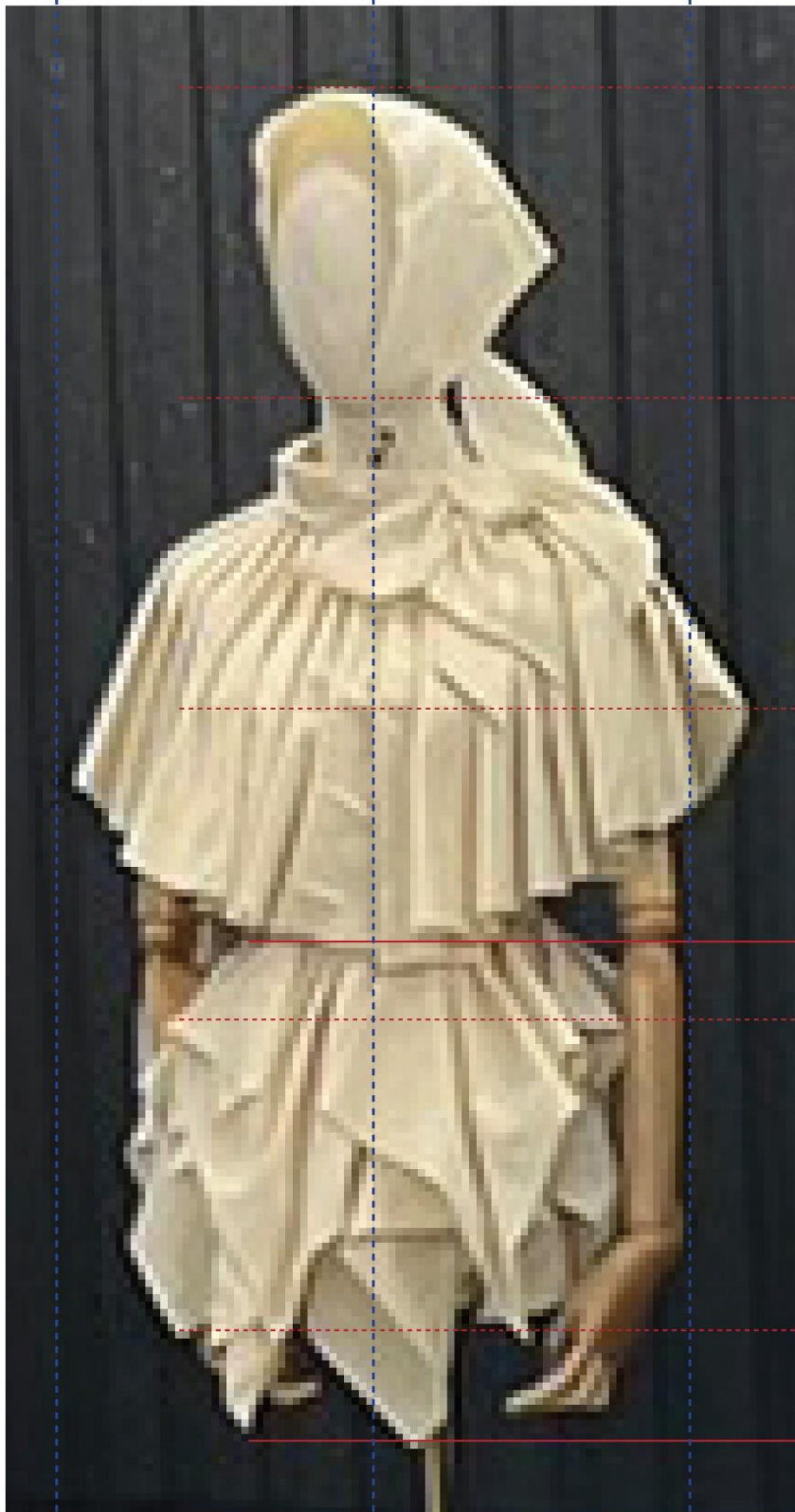


4. วาดลายใส่ในแต่ละส่วนของวงกลม

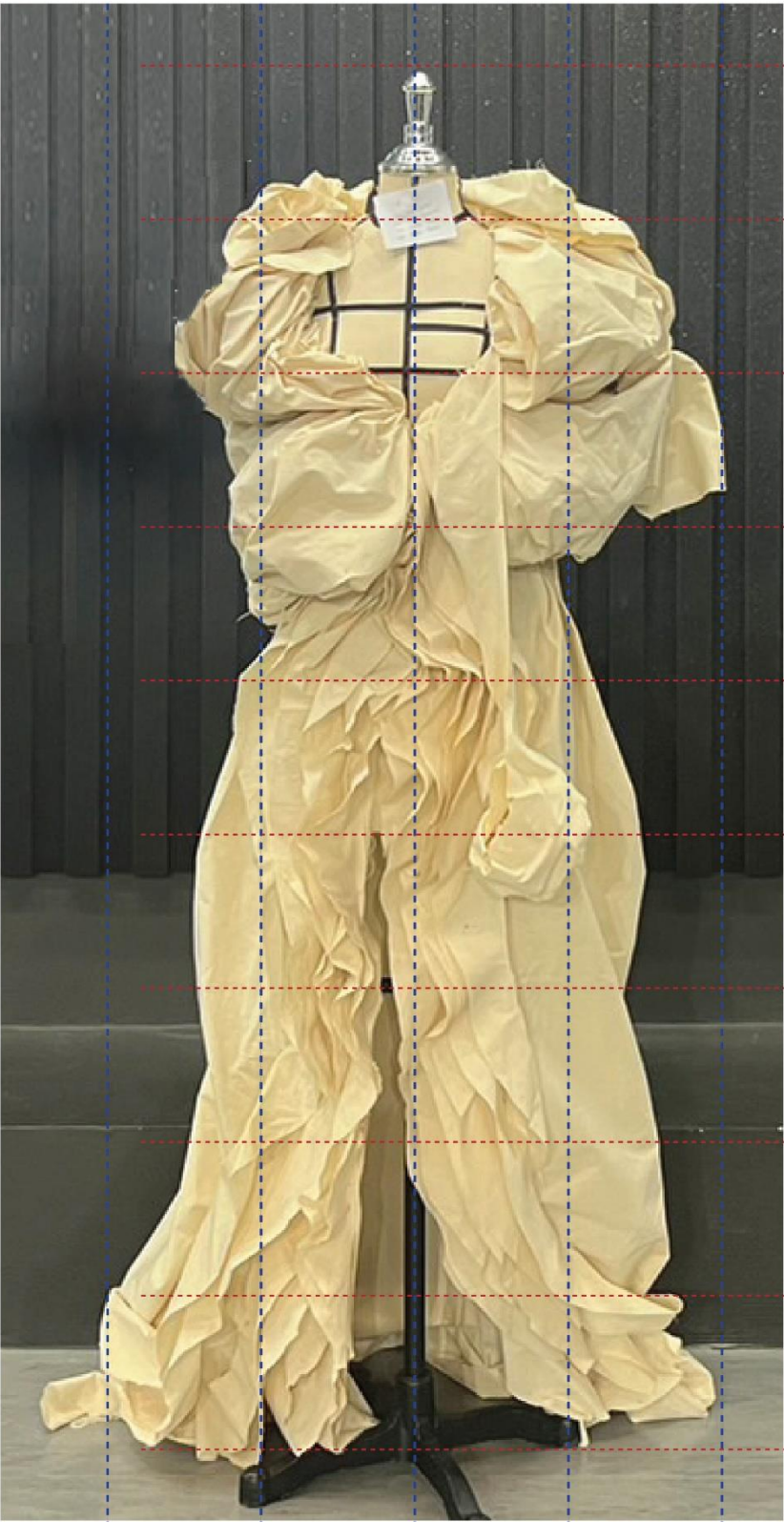




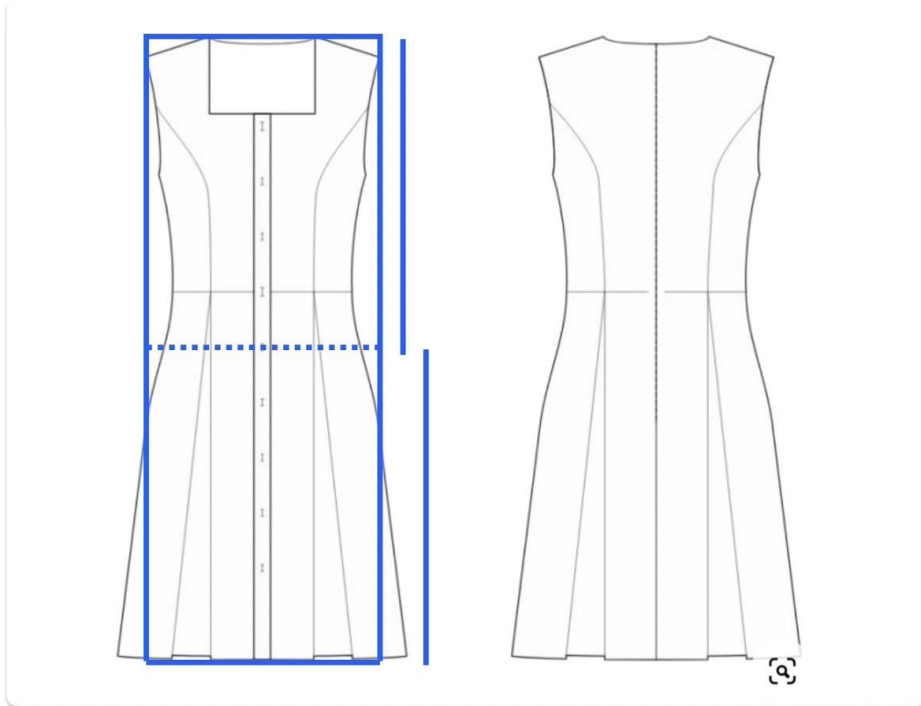
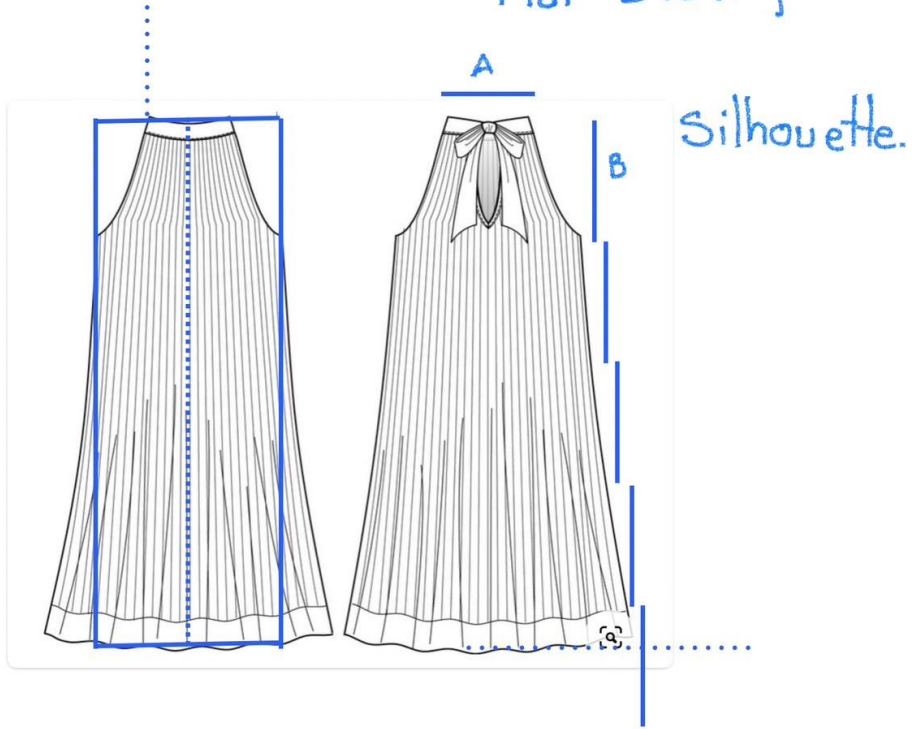








Flat Drawing.





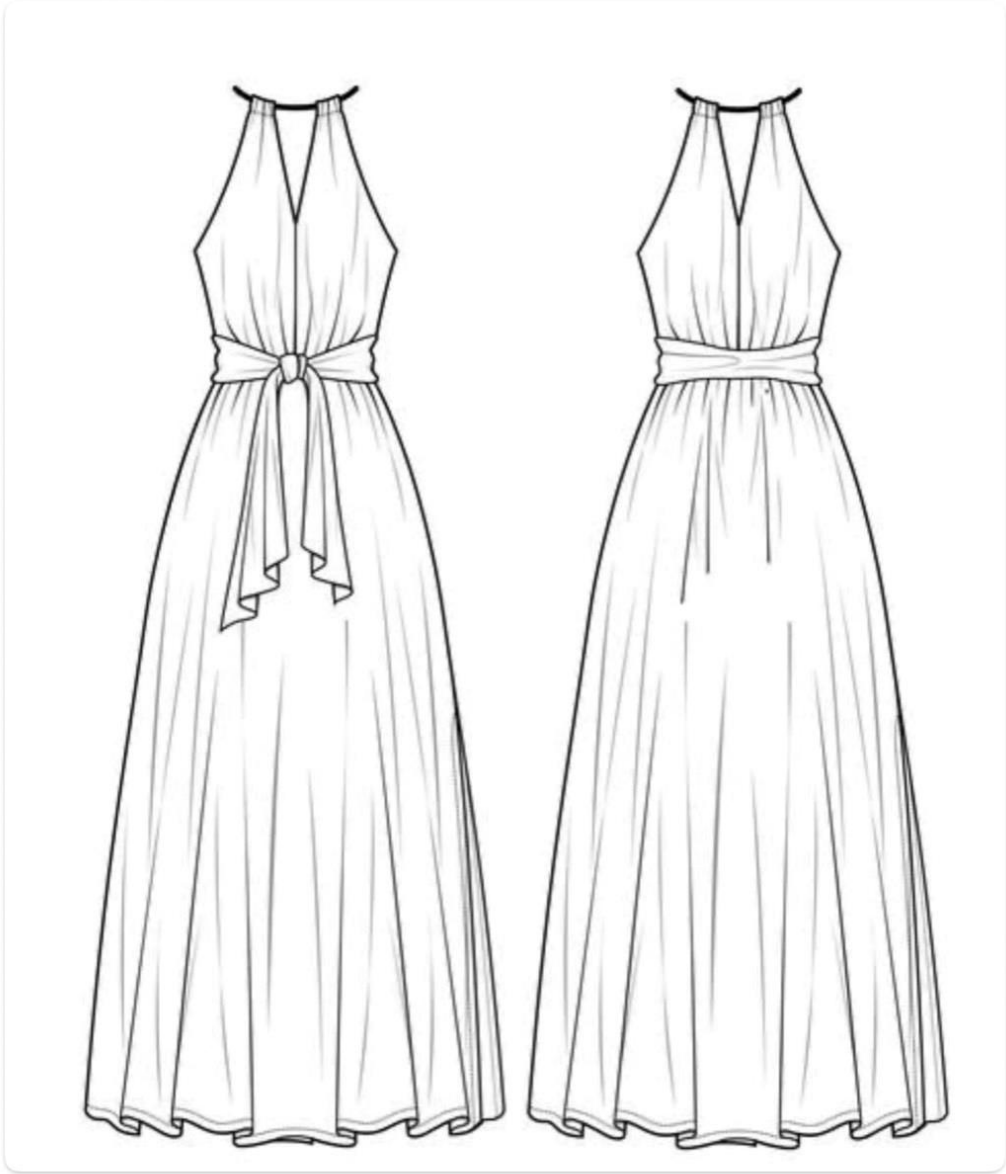


Front

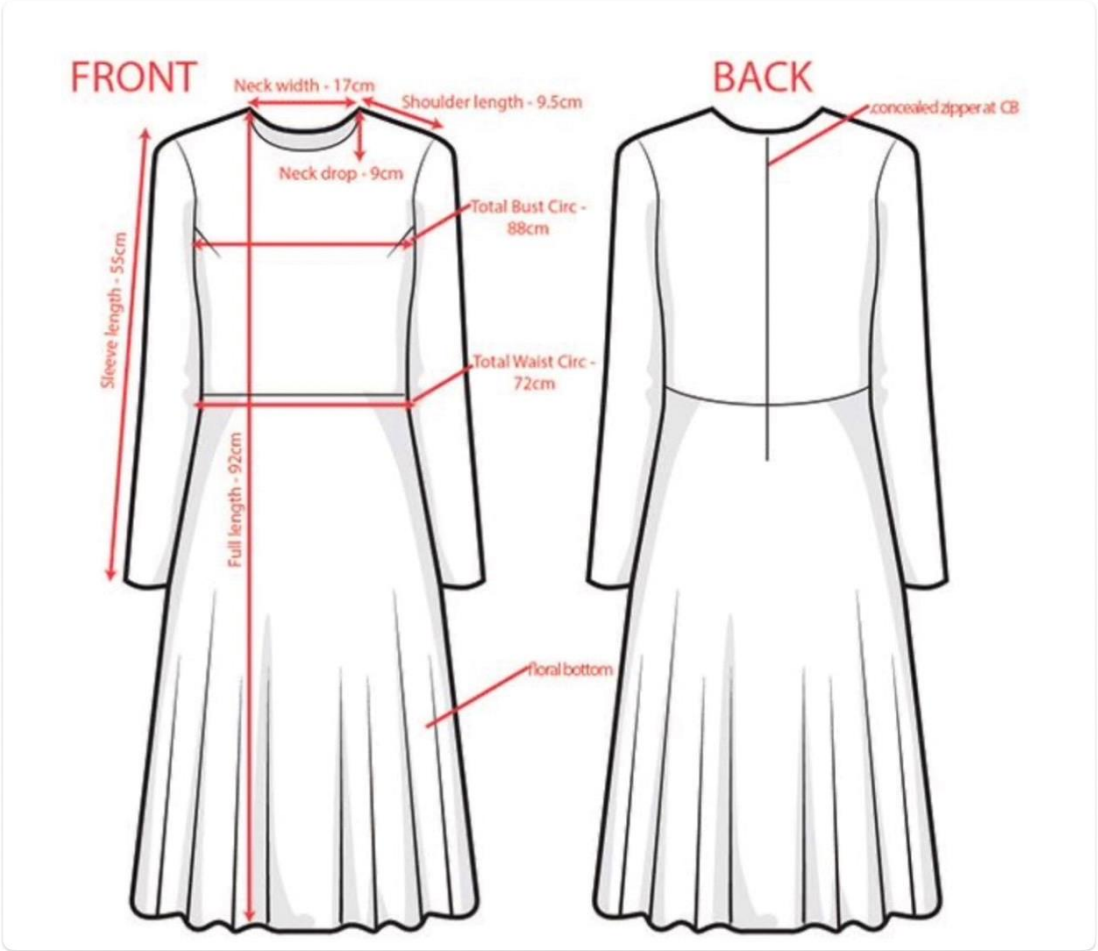


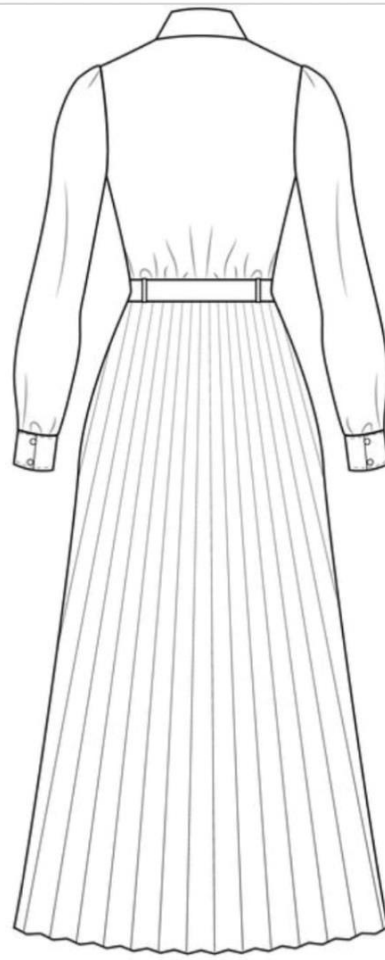
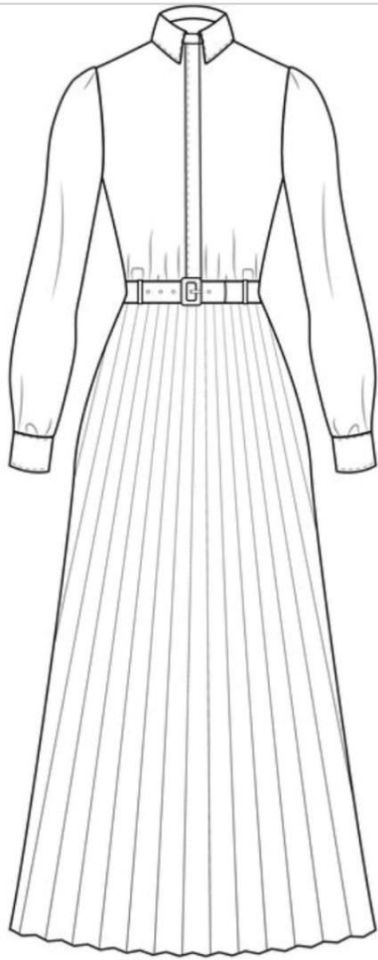
Back

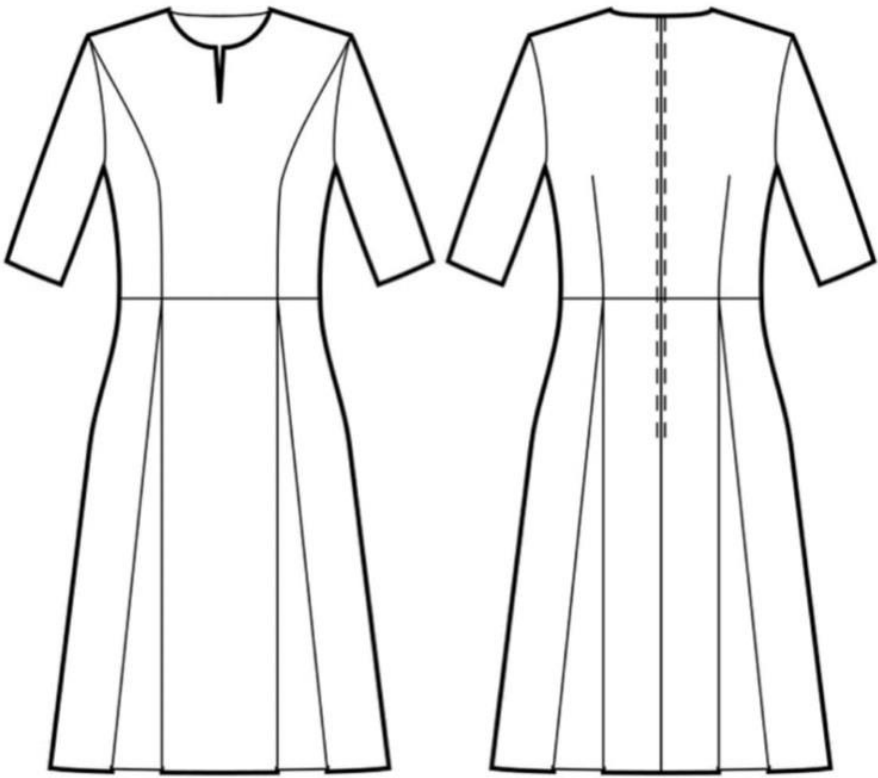




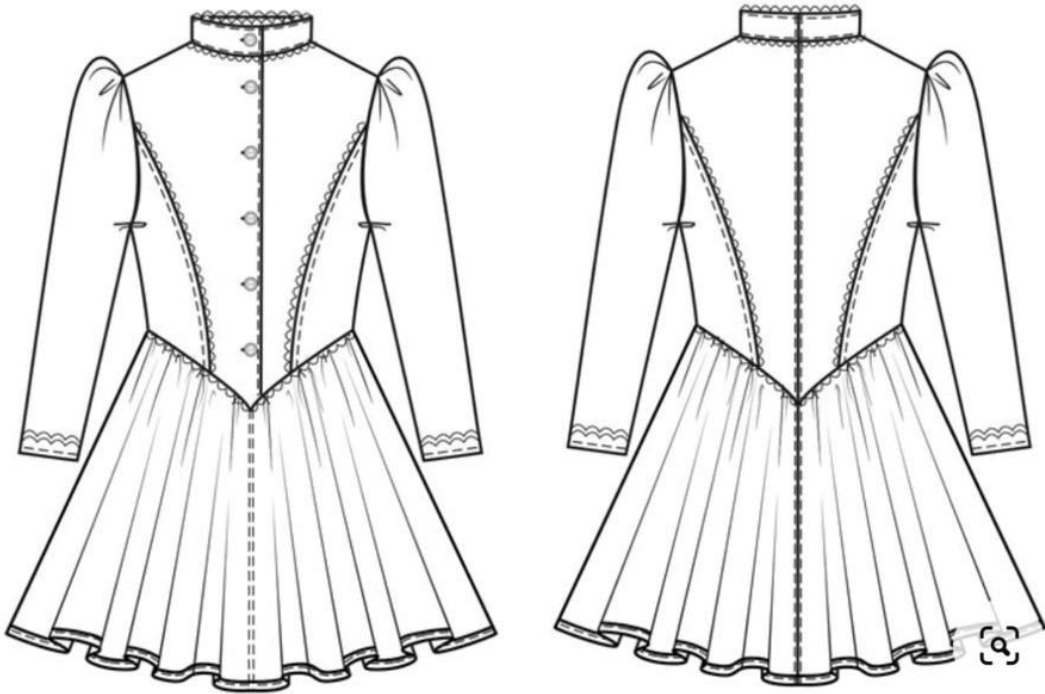








3



3